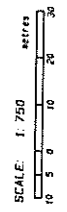


REFERENCE PLAN OF EASEMENT OF PART OF LOTS 34, 35, 36, 45 AND 46,

DL 907, GROUP 1, NWD, PLAN BCP

PURSUANT TO SECTION 89, LAND TITLE ACT.



SCALE: 1:750 metres

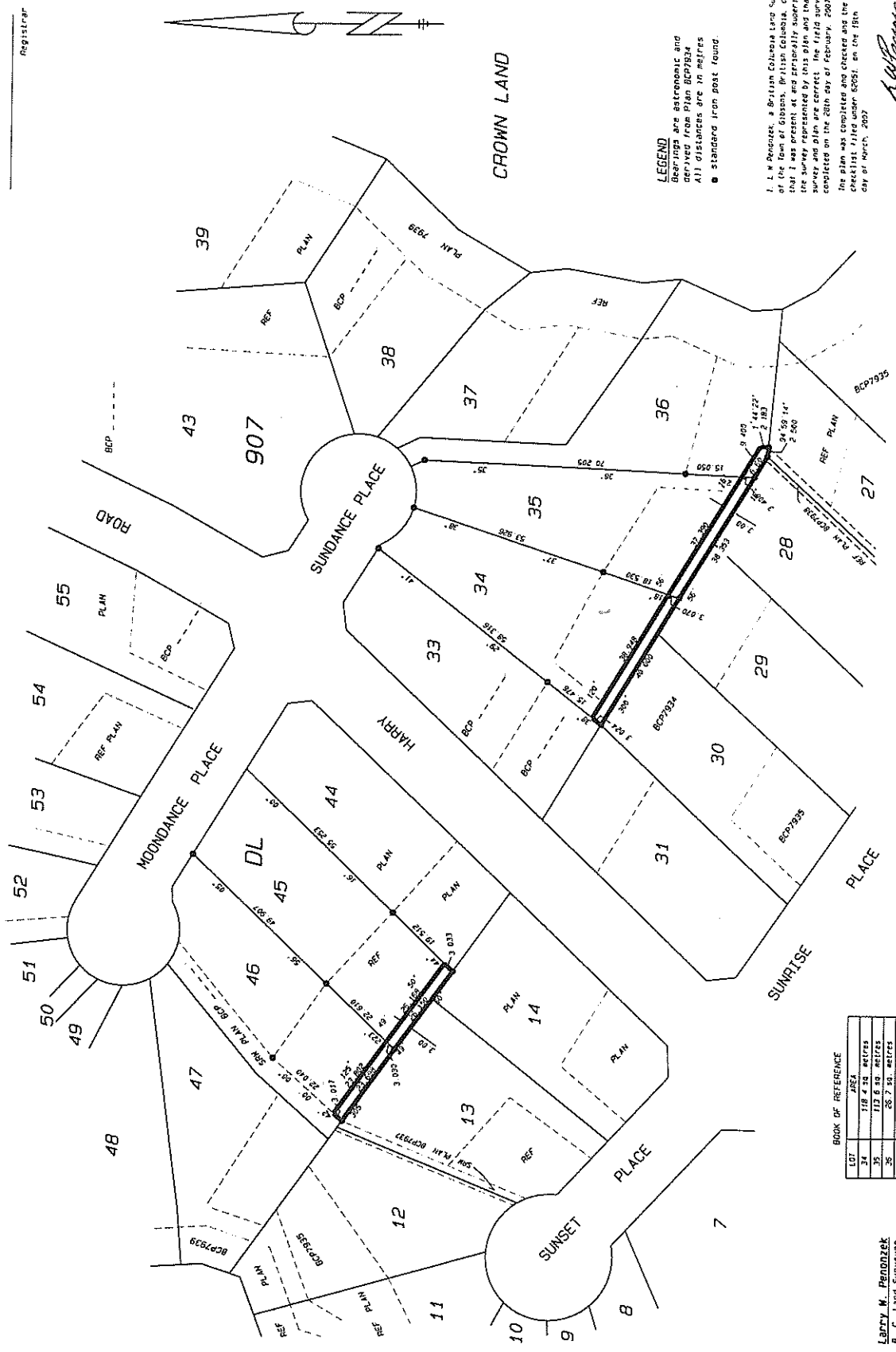
BOOKS 926, 043

THIS PLAN IS SUBJECT TO THE SURVEY DISTRICT

PLAN BCP

Deposited in the Land Title Office at New Westminster, B.C., this _____ day of _____, 2007

Registrar



LEGEND
 Bearings are astronomic and derived from Plan BCP1934
 All distances are in metres
 ■ standard iron post found

I, L.M. Bennett, a British Columbia Licensed Surveyor of the form of Gibson, British Columbia, certify that I was present at and personally supervised the survey represented by this plan and that the survey and plan are correct. The field survey was completed on the 28th day of February, 2007. The plan was completed and checked and the checklist filed under 82651, on the 15th day of April, 2007.

L.M. Bennett
 L.M. Bennett B.C.L.S.

BOOK OF REFERENCE

LOT	AREA
34	118.4 32 metres
35	112.6 33 metres
36	287.7 31 metres
45	78.5 30 metres
46	71.3 31 metres

Larry M. Bennett
 B.C. Land Surveyor
 Box 505, Gladstone, B.C.
 VAN. 1V0 P4, 866-2931